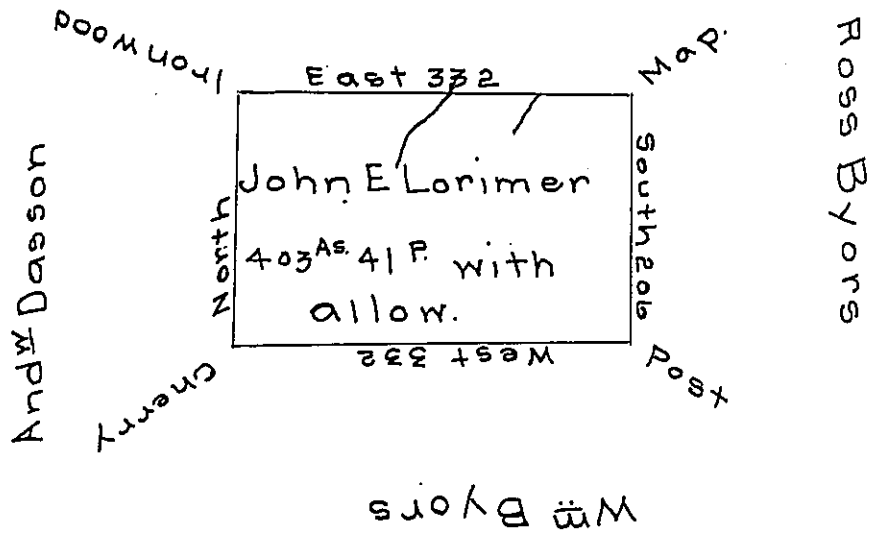


Alex^r M^oCrakin



Situate upon the waters of Sandy creek in Sandy Creek township Mercer County containing four hundred and three acres and forty one parches with allowence of six percent for roads & Surveyed April 1st 1803 in pursuence of a warrent dated ~~April~~ February 3rd 1803 granted to ~~Wm Craig~~ John E Lorimer

To Samuel Cochran Esq^r

S.G

John Findley D.S.

IN TESTIMONY that the above is a copy of the original remaining on file in the Department of Internal Affairs of Pennsylvania, made conformably to an Act of Assembly approved the 16th day of February, 1833, I have hereunto set my Hand and caused the Seal of said Department to be affixed at Harrisburg, this fifth day of September 1905

Joseph P. ...
 Secretary of Internal Affairs.